

Working with Panadent

VITABLOCS® - TRILUXE FOR CEREC®



Dr. Rich Masek Private Practice San Diego, CA

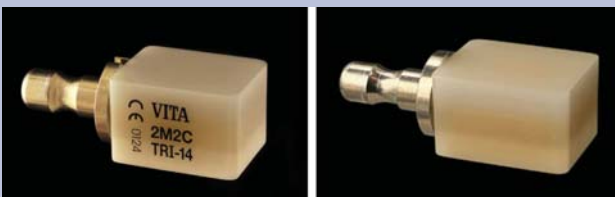
VITA TriLuxe® blocks are one of the most exciting entries into the world of CEREC materials. The TriLuxe® blocks provide a gradient of chroma that can eliminate the need for surface characterization in many situations. They are manufactured from the same material as the Mark II blocks. A special production procedure makes it possible to integrate three different degrees of color saturation (chroma), and three different degrees of translucency in one block. This makes it possible to simulate the color, shade and translucency effects present in a natural tooth achieve a better match of the restoration with the patient's remaining natural tooth substance.



Vitablocs TriLuxe® TRI-14

The TriLuxe® block is made up of 3 individual layers. The bottom Necklayer has the highest degree of pigmentation and therefore the lowest degree of translucency. The middle Bodylayer demonstrates a normal degree of shade intensity. The top Enamel layer is less shade-intensive and more translucent. The blocks are indicated for onlays and partial crowns, posterior and anterior full crowns and veneers. They can be manually polished as well as characterized and surface glazed with Vita Shading Pastes or Vita Akzent Stains.

TriLuxe® blocks are available in sizes TRI-12 (10x12x15 mm) and TRI-14 (12x14x18 mm). Both sizes are available in 1M2C, 2M2C and 3M2C VITA 3D-MASTER® shades.



Chroma variations are distributed in three layers

TriLuxe blocks are a great addition to the Vita material line for simple, esthetic CEREC restorations.



#30 Master 3D 2M1C, #31 TriLuxe 2M1C Hand polished restorations

Restorations made of VITA TriLuxe®, as with all ceramics, must not be adjusted with tungsten carbide instruments as damage to the ceramic may occur. Only fine-grained diamond instruments (40 µm) should be used for contouring, and finishing diamonds (8 µm) for pre-polishing. Finishing should be carried out at a low pressure and with ample water cooling.

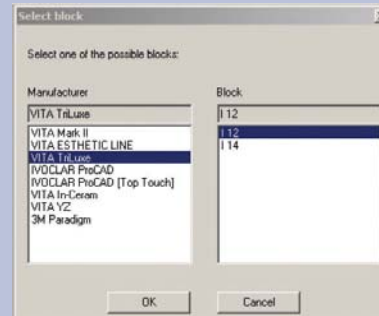
The placement of the sprue is critical for proper alignment of the chroma layers. Improper placement might place the enamel layer at the gingival or the layers vertically rather than horizontally. The placement of the sprue will vary depending upon the type of restoration being designed. The orientation of the layers of the block relative to the milling spindle is shown on diagram below.



Extended options for the selections of milling blocks in CEREC 3D version R1000 and higher now include the TriLuxe® blocks in addition to Vita YZ, Zirconia and other Inceram materials.

There are differences in the alignment of the block to the milling tools between restorations done in the Veneer Mode and the Crown Mode. As a result, selection of the TriLuxe option does not always guarantee proper alignment of the chroma layers in the milled restoration. The point of reference for the block alignment is the position of the indexing notch or the alignment of the layers.

TriLuxe Chroma Orientation



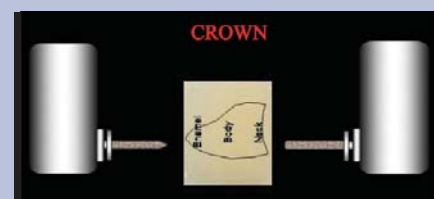
Vita TriLuxe milling block selection

The normal milling orientation for crowns places the block layers vertical and the indexing notch to the right. The Neck, or gingival margin and internal, will then be facing to the right toward the



Crown milling orientation

Cylinder bur for milling of crowns. The crown is milled horizontally with the incisal edge to the left and the cervical to the right.

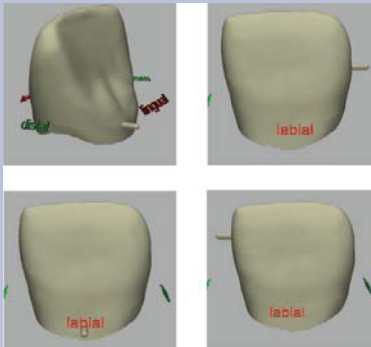


TriLuxe I-14 or mark II I-14 correct orientation

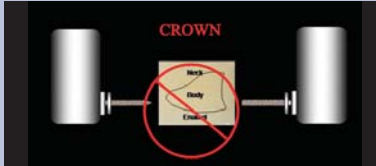
The sprue orientation of the crown can therefore be placed on any surface since the Neck shade will

CALL 01689 881788

PANADENT
LABORATORY AND SURGERY



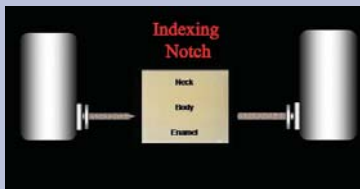
All sprue positions OK for the crown



Mark II I-14-90 Incorrect crown orientation

Bottom Line for Crown Mode: Bottom Line for Crown Mode: Bottom Line for Crown Mode: Choose TriLux or standard Mark II orientation, do not choose I-12-90 or I-14-90 for crowns and only place the sprue on the mesial or distal. This will always limit the Occlusal-Gingival or Incisal-Gingival dimension of the restoration to a maximum of 12 mm not 14 mm however. Restorations 12 mm – 14 mm in length cannot be milled in TriLux without compromising the incisal edge and the gingival margin.

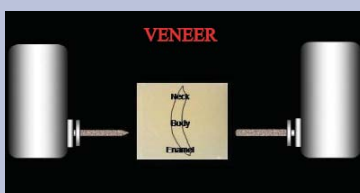
Therefore, the block will be rotated to a flat position with the indexing notch down. The Neck material will face toward the bottom of the milling chamber.



Veneer milling orientation

Therefore, the block will be rotated to a flat position with the indexing notch down. The Neck material will face toward the bottom of the milling chamber.

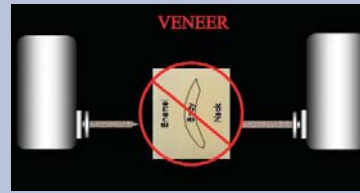
The Veneer is milled vertically in the chamber as opposed to the horizontal milling of the crown. Another peculiarity of the Veneer is that the sprue must be placed on the mesial, assuming that the camera position always places the nose of the camera to the distal of the mouth. If the optical impression is inadvertently captured with the nose of the camera toward the mesial, then the orientation is reversed in the sagittal plane.



TriLux I-14 or Mark II I-14-90 Correct orientation

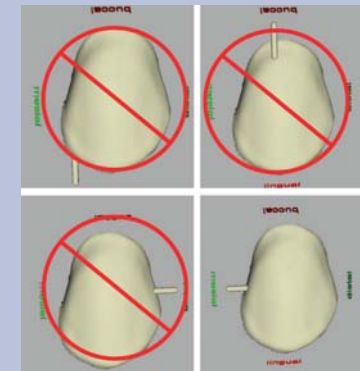
be facing to the right, toward the Cylinder bur. The layers will be vertical while on the spindle in this case.

However, choosing the I-14-90 Mark II selection for a longer crown will cause the block to be rotated to a 90° position so that the Cylinder bur can gain access to the internal of the restoration in the widest dimension. This will result in the layers being placed vertically in the restoration, not horizontally, making vertical stripes if the



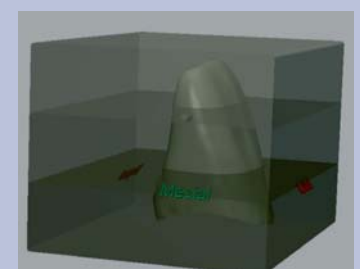
Mark II I-14 Incorrect orientation

that was constructed from a series of images introduces a new variable. This is the same as if a single unit restoration is captured backwards. The nose of the camera in these situations is by necessity toward the mesial on 1/2 of the arch. This creates a backwards or reversed orientation of the veneer. Designing the restorations will not be a problem, however, when milling, the



Use Mesial sprue position for veneer mode

Bottom Line for The Veneer mode: Choose TriLux or a 90° Mark II orientation, do not choose I-12 or I-14 and only place the sprue on the mesial. If the captured image of the preparation shows the mesial tooth at the top of the screen instead of the distal tooth, treat the situation as a backwards impression. Alter the sprue location by clicking on the distal sprue location button. In the reversed situation, the sprue will then actually be on the mesial as seen in the milling preview. As with the crown, the maximum Occlusal-Gingival dimension of the veneer is 12 mm with TriLux blocks.



A new software development since the writing of this article is the Positioning Preview of the restoration within the TriLux Block.

The restoration can be viewed and adjusted to verify the correct alignment. It is available under the Milling Preview.



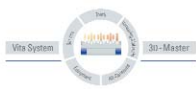


VITA All-Ceramics

Veneers made from
**VITABLOCS® for
CEREC®/inLab®**



Clinical and
dental-technical guide
by Dr. A. Devigus and G. Lombardi
Edition 07/05



VITA

New leaflet of making veneers using CEREC machines.

To order a copy of the VITA leaflet call us today on: 01689 881788

Polishing paste - with Super Diglaze



PANADENT SUPER DIGLAZE POLISHING PASTE

Super Diglaze manufactured by Panadent has not become the number one selling polishing paste in the UK by chance. The unique formulation means perfect polished results each time on CEREC Blocks.

Super Diglaze sister product Super Compoglaze is available for composite restorations.

**PRODUCTS: 80.PR034 Super Diglaze porcelain polishing paste £26.18
SPECIAL OFFER PRICE OF JUST £20.60**

Tough shades?



VITA EASYSHADE - the patented handheld device. Instant and accurate tooth colour shades



"This device entirely removes the tedious and often time-consuming element from shade taking by providing an instant and objective series of shade measurements that relate precisely to the technical process of restoration construction ..."

writes John Chope BSc BDS LDS RCS Eng MFGDP UK

Vita the leading shade taking company in the world, developed this device as a means of quickly and accurately diagnosing the basic tooth colour, irrespective of the surrounding light within the tooth shade taking area. The machine has many layers of digital analysis screens making it extremely versatile.

Cerac dentists in particular producing fast high quality ceramic restorations using the Cerac machine will find the speed and accuracy akin to the CEREC concept.

Within a few seconds a shade specification comes up on the screen enabling the dentist to select the correct Vitabloc shade. Interestingly, Vita has used a Cerac Vitabloc as the calibration tool within the unit.

Existing restorations in mouth can also be checked just by rapidly selecting a new mode on the touch screen. Easyshade is small light weight and mobile and enhances the 'high tech' dental environment.

PRODUCT: Easyshade £2500.00

DIALITE hand held shade talking light To assist day light shade taking using the Vita 3D shade guide. **PRODUCT: Dialite OFFER PRICE OF £350.00 RRP £408.42**



CALL 01689 881788
www.panadent.net

PANADENT
LABORATORY AND SURGERY

Cerec VITABLOCS

TRILUXE 3 LAYER BLOCK

TRI-LUXE

BUY 3 X 10 SETS OF BLOCKS AND
RECEIVE 1X10 BLOCKS FREE

Cat No	Product	Price each ex.Vat
48.C EC1M2CTRI12	Cerec 3 layered Felspathic Ceramic block for dentist. S.Vitabloc TriLuxe 1M2C TRI12 x 10	£125.38
48.C EC1M2CTRI14	Cerec 3 layered Felspathic Ceramic block for dentist. S.Vitabloc TriLuxe 1M2C TRI14 x 5	£72.31
48.C EC2M2CTRI12	Cerec 3 layered Felspathic Ceramic block for dentist. S.Vitabloc TriLuxe 2M2C TRI12 x 10	£125.38
48.C EC2M2CTRI14	Cerec 3 layered Felspathic Ceramic block for dentist. S.Vitabloc TriLuxe 2M2C TRI14 x 5	£72.31
48.C EC3M2CTRI12	Cerec 3 layered Felspathic Ceramic block for dentist. S.Vitabloc TriLuxe 3M2C TRI12 x 10	£125.38
48.C EC3M2CTRI14	Cerec 3 layered Felspathic Ceramic block for dentist. S.Vitabloc TriLuxe 3M2C TRI14 x 5	£72.31

Bleached teeth

MAKING OR MATCHING

Whilst unnatural, Vita has produced a 3 shaded special bleach tooth guide which conveniently attaches to the side of the Vita 3D shade guide to dentists to prescribe a suitable colour to meet patient expectations.



Naturally tooth Value finishes at '1' according to Vita's 3D shade guide. Bleaching shades have no greyness so they are denoted with Value '0' to follow the logic of this shade guide.

To enable dentists with Cerec machines to produce a matching shade, Vita provides a Vitabloc shade 0M1 for crowns and inlays. For Veneers it is preferable to use the Vita Esthetic - line blocs V7 size which enables the colour to be placed inside the veneer during cementing or preferably apply stains from the Vita shading paste set and firing them in the Vacumat 40T furnace. See staining course and staining kits.

PRODUCTS: 48.G B2600MS – Vita 3D Bleached Shade Guide to fit on side of 3D shade guide. £6.22 + vat

48.E DATM220 Vita Vacumat 40T furnace for dentists. Price: £2704.78



Stonebite Scan

HIGH QUALITY IMAGES

Stonebite Scan has been specifically developed for CEREC scanners. It records high quality antagonist images in CAD CAM dentistry. It has a stable 32 shore D hardness and a rapid 80 second intra-ora setting, making it as easy to handle as leading ordinary non scannable bite registration materials.

The hardness facilitates the user to break off and trim with a bur and check occlusion whilst in situ and fit back onto teeth or model without breaking. Stonebite Scan from Panadent/Dreve is available in 48ml cartridges.

**INTRODUCTORY PRICE OF £28.30 + VAT EACH
NORMAL PRICE OF £38.00, SAVE OVER £10.00**



CALL 01689 881788
www.panadent.net

PANADENT
LABORATORY AND SURGERY

Offers available while stocks last Prices E&OE Subject to VAT